

=====  
 ESTD Percent Report  
 =====

Sorted By : Signal  
 Calib. Data Modified : Tuesday, August 28, 2018 1:06:25 PM  
 Multiplier : 20.0000  
 Dilution : 1.0000  
 Sample Amount : 2.02000e5 [ug/mL]  
 Do not use Multiplier & Dilution Factor with ISTDs

Signal 1: FID1 A, Front Signal

Ret Time [min]	Type	Area [pA*s]	Ant / Area	Amount %	Grp	Name
2.722	-	-	-	-		THCV
2.902	BV +	110.09541	5.79788e-1	0.632000		CBC
3.003	VR+	2637.92676	5.19203e-1	13.560581		CBD
3.277	BB +	30.79386	4.57354e-1	0.139443		d8-THC
3.389	BV +	126.13197	5.23196e-1	0.653383		THC
3.468	VB +	40.14317	5.94697e-1	0.236366		CBG
3.659	-	-	-	-		CBN
4.420	-	-	-	-		PRAZEPAM

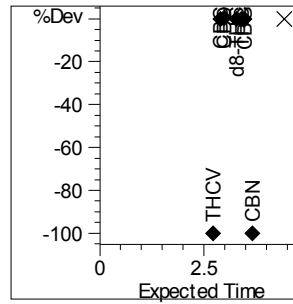
Totals : 15.221774

1 Warnings or Errors :

Warning : Time reference compound(s) not found

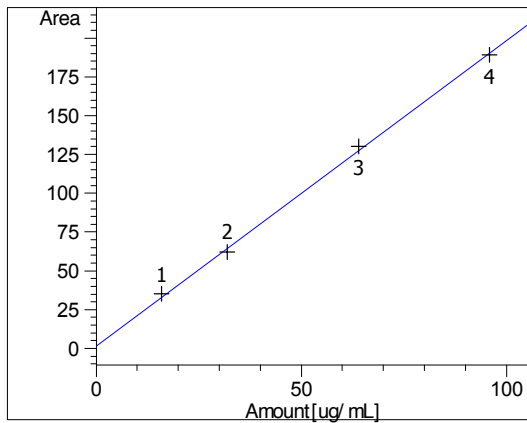
Retention Time Adjustments for Peak Identification

Reference Peak	Expected Ret Time [min]	Measured Ret Time [min]	Deviation [%]
THCV	2.722	0.000	-100.000
CBC	2.903	2.902	-0.030
CBD	2.988	3.003	0.495
d8-THC	3.282	3.277	-0.160
THC	3.395	3.389	-0.163
CBG	3.472	3.468	-0.125
CBN	3.659	0.000	-100.000

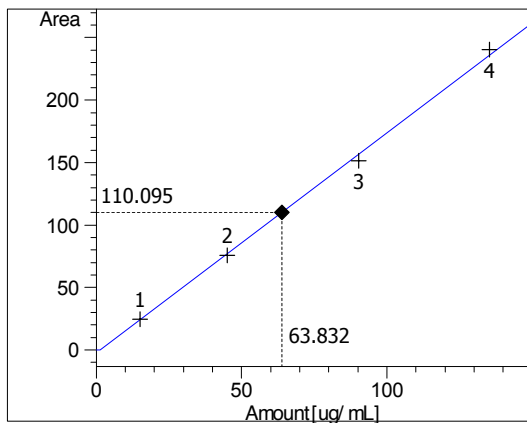


The deviations shown with x marks are used for adjusting time windows of all other peaks.

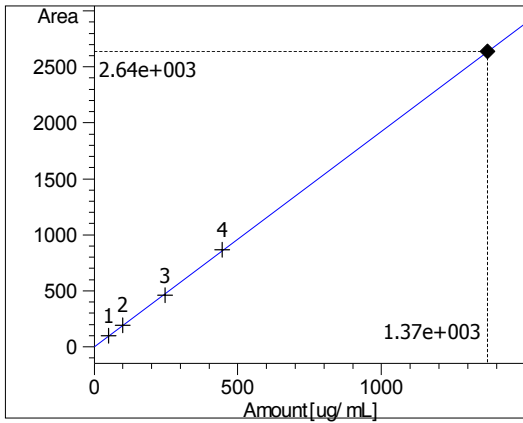
Calibration Curves



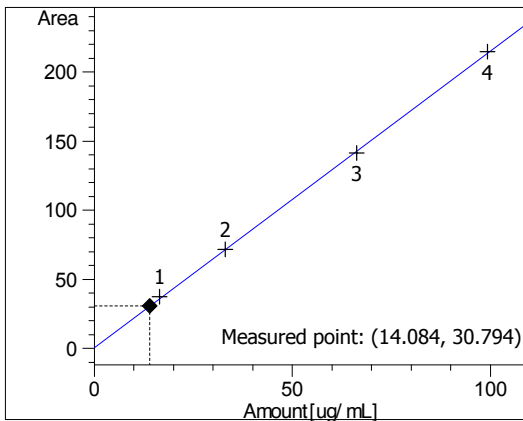
THCV at exp. RT: 2.722  
 FID1 A, Front Signal  
 Correlation: 0.99953  
 Residual Std. Dev.: 2.68379  
 Formula:  $y = mx + b$   
 m: 1.97053  
 b: 1.42567  
 x: Amount [ug/mL]  
 y: Area



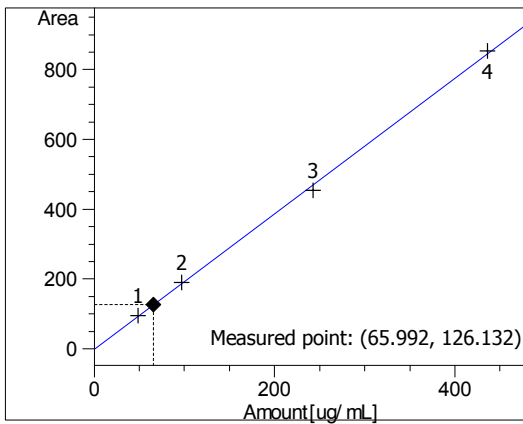
CBC at exp. RT: 2.903  
 FID1 A, Front Signal  
 Correlation: 0.99931  
 Residual Std. Dev.: 4.19711  
 Formula:  $y = mx + b$   
 m: 1.76277  
 b: -2.42586  
 x: Amount [ug/mL]  
 y: Area



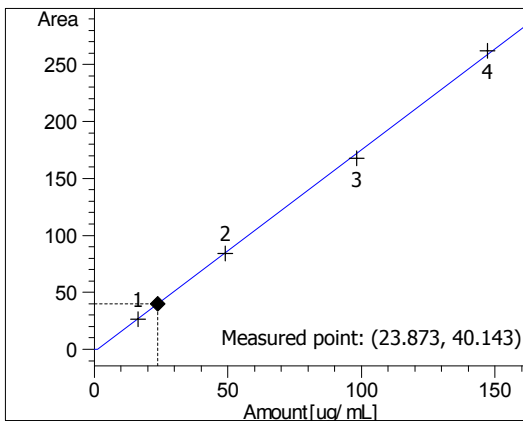
CBD at exp. RT: 2.988  
 FID1 A, Front Signal  
 Correlation: 0.99970  
 Residual Std. Dev.: 9.90767  
 Formula:  $y = mx + b$   
 m: 1.92655  
 b: -7.18709e-1  
 x: Amount [ug/mL]  
 y: Area



d8-THC at exp. RT: 3.282  
 FID1 A, Front Signal  
 Correlation: 0.99993  
 Residual Std. Dev.: 1.20630  
 Formula:  $y = mx + b$   
 m: 2.14800  
 b: 5.42067e-1  
 x: Amount [ug/mL]  
 y: Area

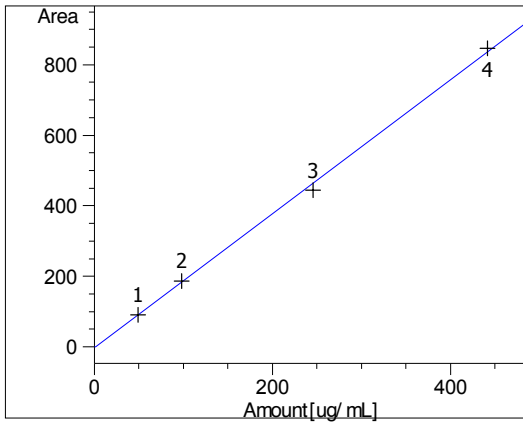


THC at exp. RT: 3.395  
 FID1 A, Front Signal  
 Correlation: 0.99965  
 Residual Std. Dev.: 10.43831  
 Formula:  $y = mx + b$   
 m: 1.94414  
 b: -2.16525  
 x: Amount [ug/mL]  
 y: Area

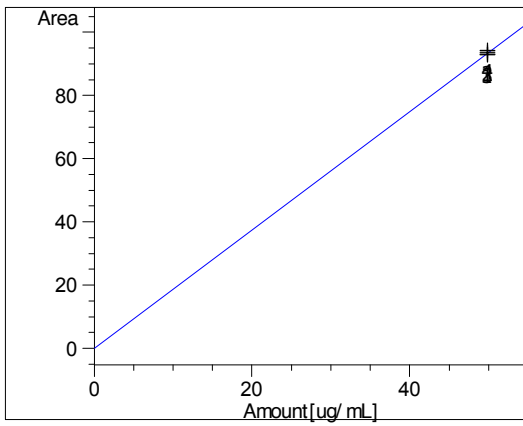


CBG at exp. RT: 3.472  
 FID1 A, Front Signal  
 Correlation: 0.99967  
 Residual Std. Dev.: 3.20562  
 Formula:  $y = mx + b$   
 m: 1.77335  
 b: -2.19206  
 x: Amount [ug/mL]  
 y: Area

Sample Name: CBDa 30-23-2



CBN at exp. RT: 3.659  
FID1 A, Front Signal  
Correlation: 0.99943  
Residual Std. Dev.: 13.27754  
Formula:  $y = mx + b$   
m: 1.90458  
b: -3.93067  
x: Amount [ug/mL]  
y: Area



PRAZEPAM at exp. RT: 4.425  
FID1 A, Front Signal  
Correlation: 0.99993  
Residual Std. Dev.: 0.58075  
Formula:  $y = mx + b$   
m: 1.87286  
b: -4.67604e-14  
x: Amount [ug/mL]  
y: Area

=====  
\*\*\* End of Report \*\*\*